

# LOW BACK PAIN & SCIATICA



## FALL 2015 DATA

1061 PROCEDURES

### What's important here?

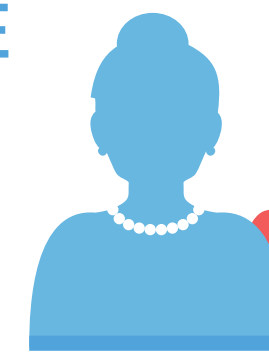
The patient results detailed on this infographic are mostly **MEN**, who are **MIDDLE AGED** and only slightly **OVERWEIGHT** (BMI>25).

## PATIENT DEMOGRAPHICS

45%

FEMALE

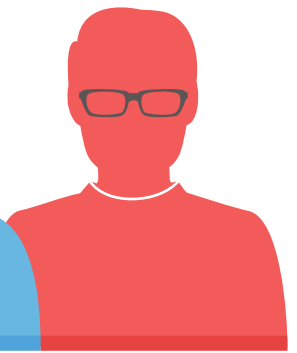
(474)



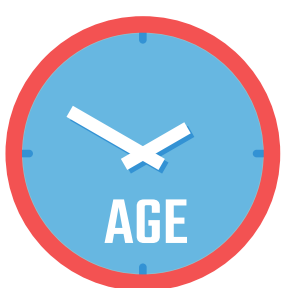
55%

MALE

(587)



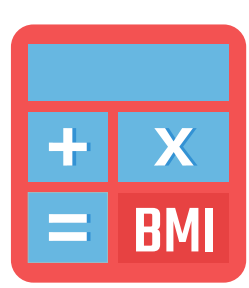
53 YEARS



AGE

(16 - 91)

26.5



BMI

(15 - 50)

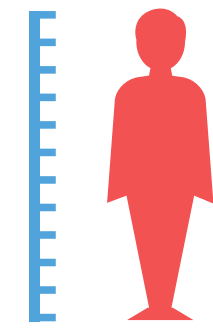
176 lbs



WEIGHT

(103 - 305)

68"



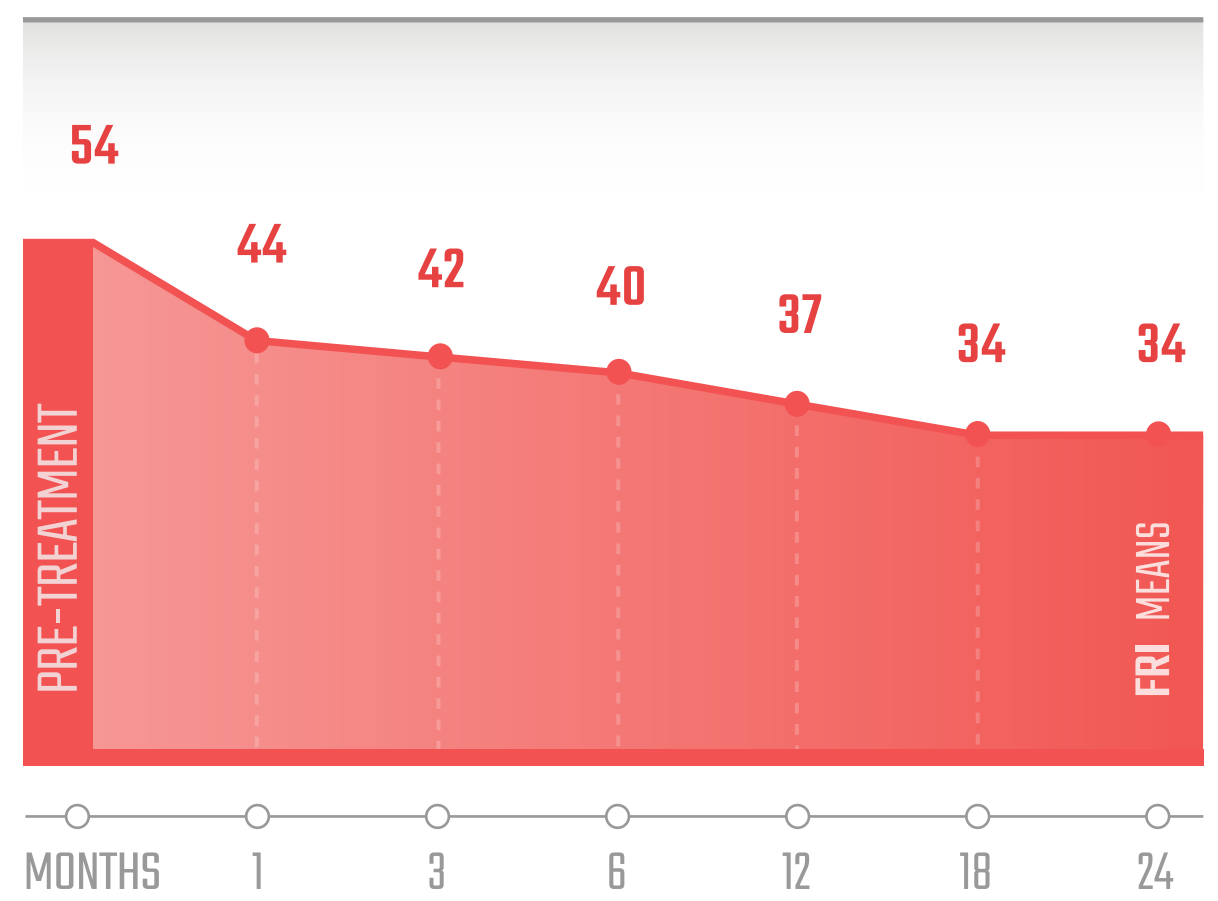
HEIGHT

(48" - 80")

## PATIENT IMPROVEMENT

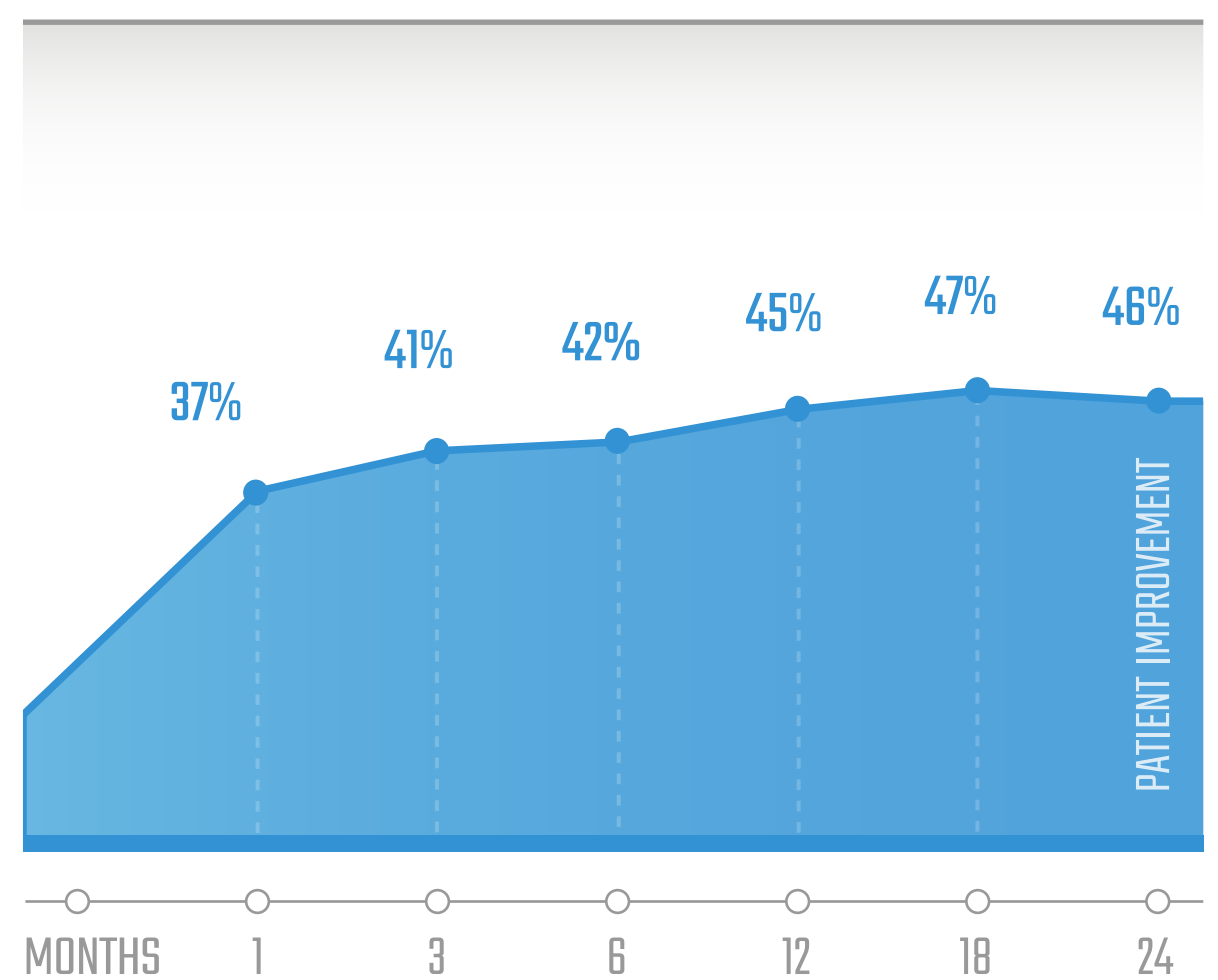
### Functional Scale Reported by Patients

The red graph to the right is the mean of Functional Rating Index (FRI) scale at the same time points. Higher score represents higher pain and disability, decrease in score represents improvement in pain and function.



### Means of Percent Improvement by Patients

The blue graph to the right is the mean of reported relief at specific follow-up time points. For example, patients at 12 months after treatment may have reported anything from no relief, to 50% relief, to 90% relief the mean of all of those reports was 45% improved.



Numbers of procedures followed up for percent improvement outcomes were the following: 263 at 1 month, 408 at 3 months, 369 at 6 month, 313 at 12 months, 227 at 18 months, 174 at 2 years, 83 at 3 years, 38 at 4 years, and 15 at 5 years (60 months).

Some patients receive more than one injection: 162 patients received one additional injection, 85 received two additional injections, and 53 received at least three additional injections.

### About This Data

PL stands for "Platelet Lysate". We take our novel Super Concentrated Platelet (SCP) mix and break open all of the platelets to get the growth factors out. Why? Just like an immediate release pill, sometimes it's better to have more growth factors on the ground to help stimulate cells toward repair. So while SCP is like a timed released pill which releases growth factors slowly, PL is like an immediate release pill. With experience extending back to 2005, we have found that PL works best around nerves.

### Caution!

This is registry data, which is not the same as a controlled trial. This means it was collected as patients were treated.

The Regenexx® Procedures are the nation's most advanced non-surgical stem cell and blood platelet treatments for common injuries and degenerative joint conditions, such as osteoarthritis and avascular necrosis.

These stem cell procedures utilize a patient's own stem cells or blood platelets to help heal damaged tissues, tendons, ligaments, cartilage, spinal disc, or bone.