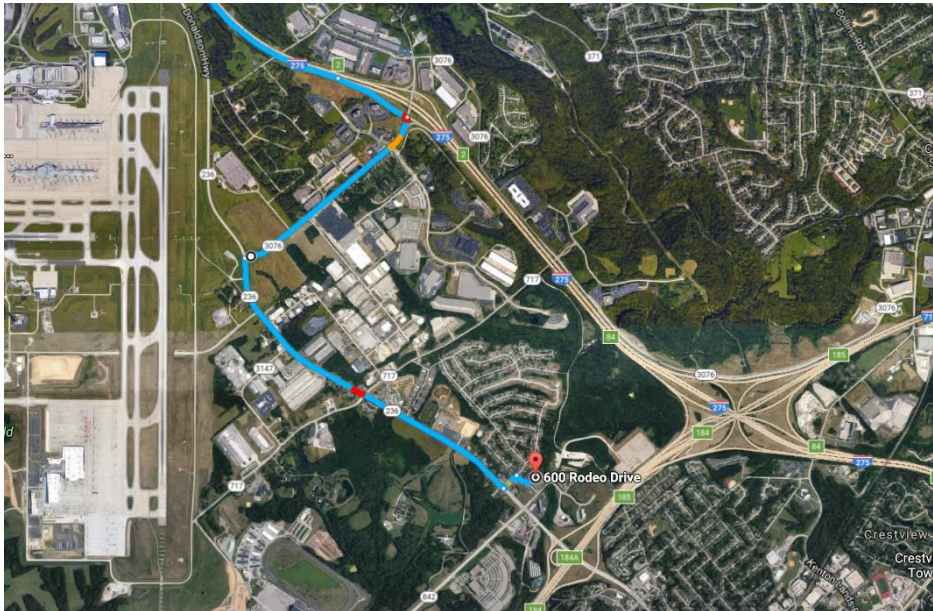


# Alternative Routes to Beacon NKY – 600 Rodeo Drive, Erlanger, KY



## From 275 South



Take exit 2 for Mineola Pike

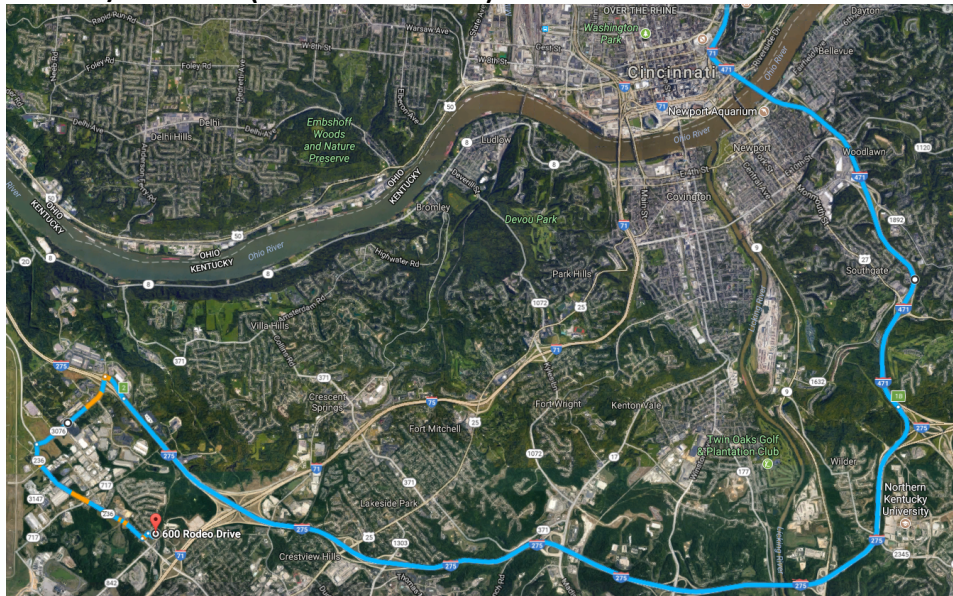
Turn Right onto Route 3076/Mineola Pike

Drive 1.1 miles then turn Left on KY-236 E

Drive 1.6 miles then turn Left on Cherry Tree Ln

Drive 430ft then turn Right onto Rodeo Drive

## From 71/471 South (Ohio down into KY)



Keep right at the fork to continue on I-471 S, follow signs for Newport, KY

Drive 5.6 miles then take exit 1B to merge onto I-275 W

Take exit 2 for Mineola Pike

Turn Left onto Route 3076/Mineola Pike

Drive 1.1 miles then turn Left on KY-236 E

Drive 1.6 miles then turn Left on Cherry Tree Ln

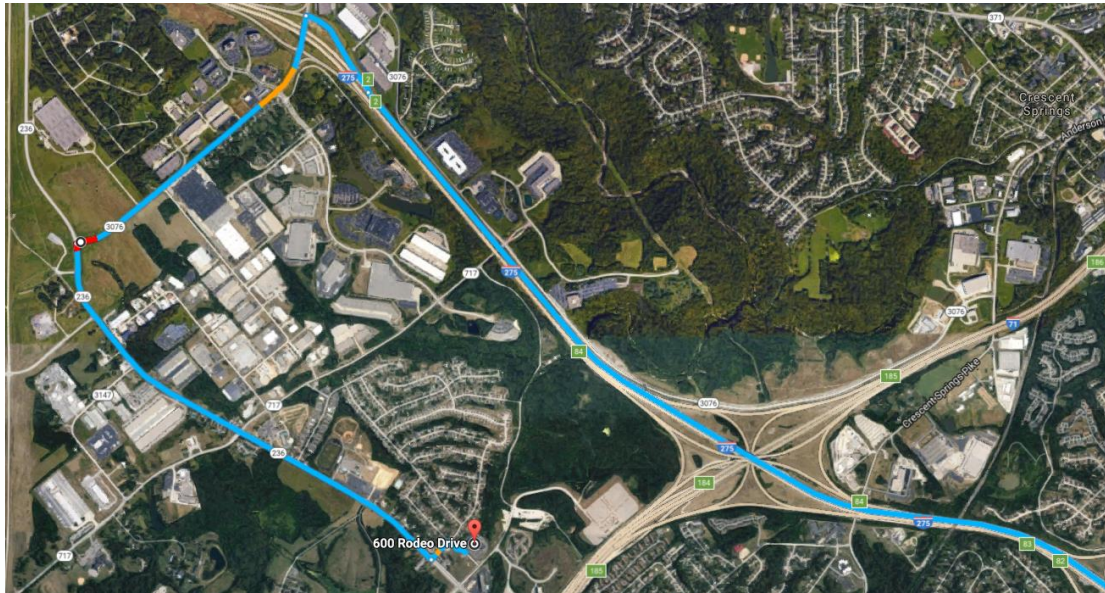
Drive 430ft then turn Right onto Rodeo Drive

I-71/75 S to Erlanger/KY 236 will be closed beginning June 23 for the Brent Spence Bridge construction project. Updates to closures and affected areas will be posted at [BrentSpence2017.org](http://BrentSpence2017.org).



## Alternative Routes to Beacon NKY – 600 Rodeo Drive, Erlanger, KY

### From 275 West



Take exit 2 for Mineola Pike

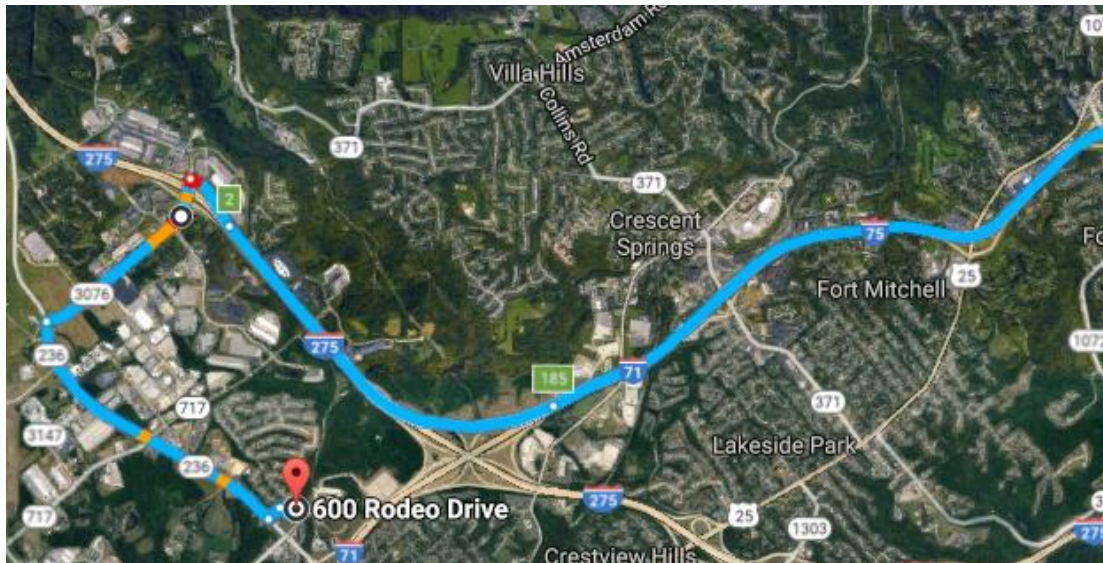
Turn Left onto Route 3076/Mineola Pike

Drive 1.1 miles then turn Left on KY-236 E

Drive 1.6 miles then turn Left on Cherry Tree Ln

Drive 430ft then turn Right onto Rodeo Drive

### From 75 South (Ohio down into KY)



Use the right 2 lanes to take exit 185 to merge onto I-275 W toward Airport

Take exit 2 for Mineola Pike

Turn Right onto Route 3076/Mineola Pike

Drive 1.1 miles then turn Left on KY-236 E

Drive 1.6 miles then turn Left on Cherry Tree Ln

Drive 430ft then turn Right onto Rodeo Drive

# B

I-71/75 S to Erlanger/KY 236 will be closed beginning June 23 for the Brent Spence Bridge construction project. Updates to closures and affected areas will be posted at [BrentSpence2017.org](http://BrentSpence2017.org).